



# ESSEX COUNTY OFFICE OF PUBLIC HEALTH MANAGEMENT NEWSLETTER



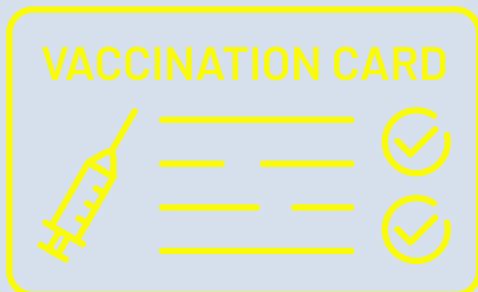
## MOBILE HEALTH CLINIC

Essex County and RWJBarnabas Health have partnered together to provide Mobile Health Clinics throughout the County. These clinics will bring health screenings, educational information and referrals to underserved residents. It is part of our ongoing initiative to promote wellness and healthy lifestyles. For a schedule of upcoming clinics, scan the QR Code or visit [Essexcountynjhealth.org](https://Essexcountynjhealth.org).

Scan the QR Code below  
for our Mobile Health  
Clinic Schedule



## VACCINES FOR CHILDREN PROGRAM



Vaccines For Children Clinics are available by appointment only and offer free ACIP Vaccines to children through 18 years of age. To schedule an appointment or learn more, call our Call Center at 973-877-8456. Visit [essexcountynjhealth.org/immunizations](https://essexcountynjhealth.org/immunizations) for eligibility requirements.



## ACCESS TO CARE-FEASIBILITY STUDY



Essex County is invested in furthering our efforts to understand the health needs across our county and the opportunities or pathways to implement sustainable solutions to address them. After completing a comprehensive Community Health Assessment (CHA) in 2023, we were able to obtain valuable insight into the county's health needs. The CHA needs assessment was the first step in enhancing our overall capacity to improve the health of all county residents.

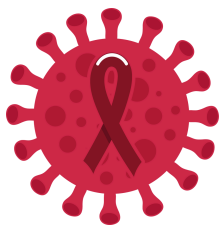
Now, we are excited to announce we have begun the next phase. The Essex County Office of Public Health Management (ECOPHM) is conducting a county-wide Access to Care Feasibility Study. The purpose of this study is to investigate and improve access to preventative and primary healthcare services in Essex County.

We continue to enhance and address the healthcare needs of all of Essex County. Working together we will continue Putting Essex County's Health First.

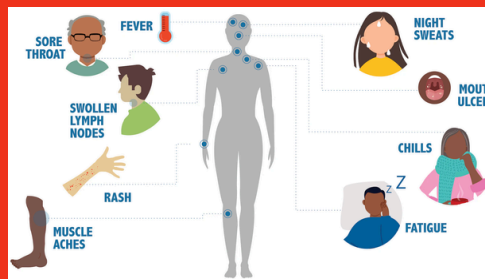




# HIV/AIDS AWARENESS MONTH



*HUMAN IMMUNODEFICIENCY VIRUS (HIV) IS A VIRUS THAT ATTACKS THE BODY'S IMMUNE SYSTEM. WITHOUT TREATMENT, IT CAN LEAD TO ACQUIRED IMMUNODEFICIENCY SYNDROME (AIDS). WITH PROPER MEDICAL CARE, ONE CAN CONTROL THE VIRUS.*



*MOST PEOPLE HAVE FLU-LIKE SYMPTOMS WITHIN 2 TO 4 WEEKS AFTER INFECTION. SYMPTOMS MAY LAST FOR A FEW DAYS OR SEVERAL WEEKS. SOME PEOPLE HAVE NO SYMPTOMS AT ALL. THE ONLY WAY TO KNOW IF YOU HAVE HIV IS TO GET TESTED. VISIT YOUR DOCTOR OR A CLINIC TO GET A BLOOD TEST. RESULTS ARE CONFIDENTIAL.*

**More tools** than ever are **available** to **prevent HIV**.



*MORE TOOLS THAN EVER ARE AVAILABLE TO PREVENT HIV. SOME PREVENTION STRATEGIES INCLUDE: USING CONDOMS CORRECTLY, NEVER SHARING NEEDLES, SYRINGES, OR OTHER DRUG INJECTION EQUIPMENT, AND USING PrEP (PRE-EXPOSURE PROPHYLAXIS) AND PEP (POST-EXPOSURE PROPHYLAXIS).*

**U=U**  
**UNDETECTABLE**  
**EQUALS**  
**UNTRANSMITTABLE**

*HIV TREATMENT INVOLVES TAKING MEDICINE AS PRESCRIBED BY A HEALTH CARE PROVIDER AND SHOULD BE TAKEN SOON AFTER A DIAGNOSIS. HIV TREATMENT REDUCES THE AMOUNT OF HIV IN THE BLOOD, MAKING THE VIRUS UNDETECTABLE. HAVING AN UNDETECTABLE VIRAL LOAD REDUCES THE RISK OF HIV TRANSMISSION.*

## Let's Stop HIV & AIDS Together!

HELP US PUT A STOP TO HIV STIGMA AND PROMOTE HIV TESTING, EDUCATION, PREVENTION, AND TREATMENT FOR EVERYONE!

# LAST MONTH



On November 10th, the Essex County Office of Public Health Management proudly hosted its inaugural *Road to Wellness* event at the Cherry Blossom Welcome Center in Essex County Branch Brook Park! This exciting community event featured a wide variety of free healthcare providers, medical screenings, and wellness services, all aimed at enhancing the health and well-being of Essex County residents. Take a look at some highlights from this fantastic event in the photos below!



**Missed us? Don't worry we will be back next year!**

**Keep a lookout for any upcoming events on our website [www.essexcountynjhealth.org](http://www.essexcountynjhealth.org)!**