

ESSEX COUNTY OFFICE OF PUBLIC HEALTH MANAGEMENT NEWSLETTER



COMMUNITY HEALTH ASSESSMENT, 2023

The Essex County Office of Public Health Management (ECOPHM) and the Healthy Essex Coalition partner to improve the health of all Essex County residents through extensive collaboration. Conducting the Community Health Assessment (CHA) was the first step in identifying community strengths and challenges used to prioritize strategies aimed at improving health.

MOBILE HEALTH CLINIC

Essex County and RWJBarnabas Health have partnered together to provide Mobile Health Clinics throughout the County. These clinics will bring health screenings, educational information and referrals to underserved residents. It is part of our ongoing initiative to promote wellness and healthy lifestyles. For a schedule of upcoming clinics, scan the QR Code or visit Essexcountynjhealth.org.



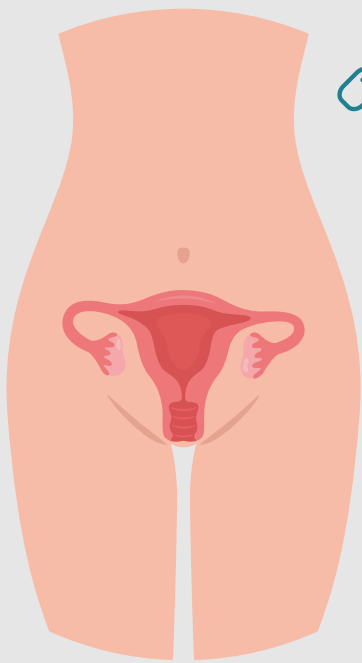
Scan the QR Code
below for our
Mobile Health
Clinic Schedule






Cervical Cancer Awareness Month

January 2024



Cancer in the cervix is known as  **Cervical Cancer**. The cervix connects the vagina (birth canal) to the upper part of the uterus. The uterus (or womb) is where a baby grows during pregnancy.

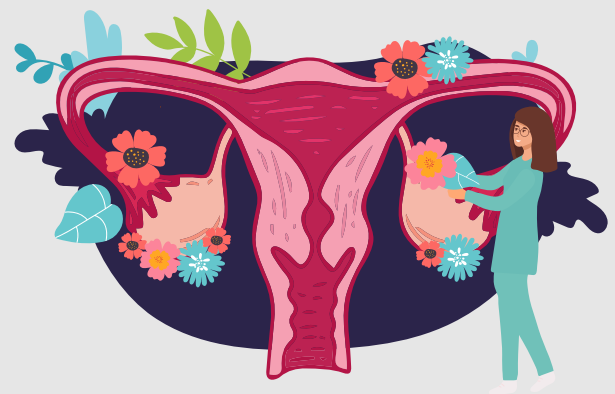
Most cervical cancers are caused by human papillomavirus (HPV). The HPV virus can be passed from one person to another during sex.

PREVENTION - VACCINES AND SCREENINGS:

The HPV vaccine protects against the types of HPV that most often cause cervical, vaginal, and vulvar cancers.

There are 2 types of screening tests:

- The Pap test (or Pap smear) looks for precancers, cell changes on the cervix
- The HPV test looks for the virus (human papillomavirus) that can cause these cell changes.



[Rutgers Cancer Institute of New Jersey](#)

[Click Here for more information](#)

December 18, 2023